

**VILLA
ALVARADO**
APARTMENTS

Welcome

Spacious Studio Apartment Model
More photos online at www.villaalvarado.com



**A Great Place
to Come
Home To!**

1330 Contra Costa Ave.,
San Pablo, CA 94806
(510) 236-7761 • Fax: (510) 236-7764
manager@villaalvarado.com
www.villaalvarado.com

Relax on your private patio or deck amid the tall trees, where green is a relaxing lifestyle! Enjoy the sparkling pool or get-togethers in our clubhouse.

Spacious Apartment Designs
with Lots of Closet Space

Gated Community

Ceiling Fans

Gas Cooking Ranges

Dishwashers (Some Apartments)

Walk-In Closets (Some Apartments)

Six Convenient Laundry Care Centers

Beautiful Garden Style Landscaping
with Lovely Courtyard Views

Sparkling Blue Pool

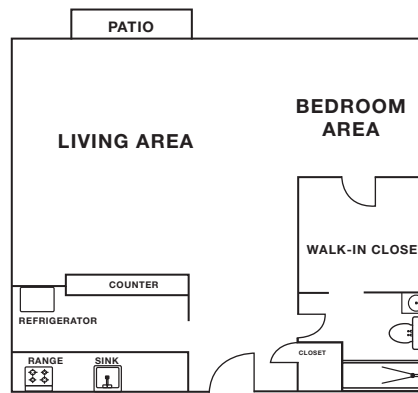
Reserved Parking with Extra Parking Available

Cats are Welcome with Security Deposit

Friendly, Professional Onsite Management
and 24-Hour Onsite Maintenance

VILLA ALVARADO

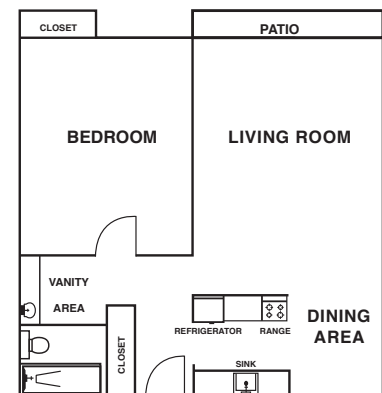
APARTMENTS



Studio 460 SF

Rent \$ _____ Deposit \$ _____

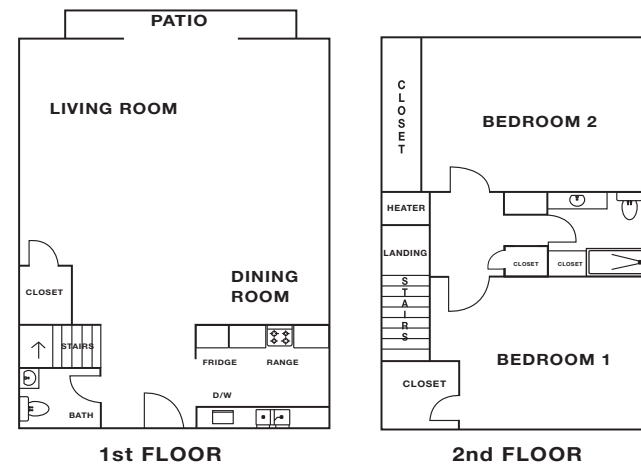
Our extra large studio apartment home has an awesome design, with a sleeping alcove and walk-in closet! This spacious 460 square foot studio comes with a full kitchen, full bath and lots of storage.



1 Bedroom 650 SF

Rent \$ _____ Deposit \$ _____

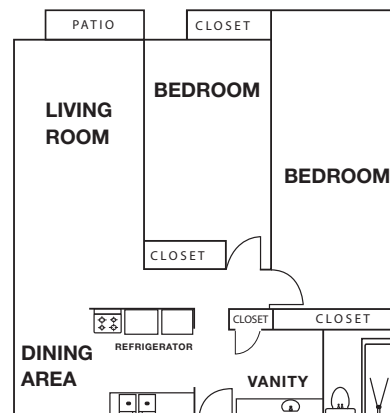
This great one-bedroom floorplan features a separate dining area and bathroom vanity, spacious bedroom, 650 square feet of living space, and a large patio or deck!



2 Bedroom Townhome 990 SF

Rent \$ _____ Deposit \$ _____

Our huge 990 square foot townhouse features a large living room, one and a half baths, and two large private bedrooms! Throw in a large patio, lots of closet space, and a pass-through kitchen, and you have a great apartment. The two-story floorplan brings a great new dimension to apartment living.



2 Bedroom 735 SF

Rent \$ _____ Deposit \$ _____

Our well-designed two bedroom one-bath floorplan offer lots of closet space. At 735 square feet, this apartment might be just right for you!

Security Deposit

\$ _____

Application Fee

\$ _____

Lease Term

Available Date

Apt. being considered

Apt. # _____

